

Welcome to Playa Nicuesa Rainforest Lodge

A unique adventure travel destination: lush, green vegetation as far as the eye can see, with leaves as big as elephant ears. Jade colored water. Toucans, monkeys, iguanas, dolphins, majestic blue butterflies – all are here at Playa Nicuesa Rainforest Lodge, a real **Costa Rica Eco Lodge in Golfo Dulce**.

If physical challenge is what you want... it's here. If rest and relaxation is what you need... it's here. And everything in between! We are a destination lodge that offers kayaking, fishing, snorkeling, paddle boarding, rain forest hiking, wildlife viewing, yoga and massage right out our doorstep.

Enjoy the uniquely and beautifully designed main lodge overlooking the rainforest or relax in your private jungle room or cabin. Freshly caught fish, locally grown vegetables, and tropical fruit create an authentic Costa Rican **culinary experience** at our tree-house style restaurant overlooking the lush canopy of trees.

This unique Costa Rica eco lodge is **sensitively designed with the environment** and constructed from naturally fallen trees, recycled materials and harnesses the natural energy from the sun to provide electricity.

What also makes Playa Nicuesa Rainforest Lodge so unique, pristine and private is that the lodge is **accessible only by boat**. Dramatic views of the mountains surrounding the Pacific Coast gulf welcome you to the lodge as you approach by boat. Once you arrive at the lodge, **lose yourself in the tropical paradise that surrounds you, and let the adventure begin!**



Location and Boat Transfers Coordination



The best way to get to Playa Nicuesa Rainforest Lodge is to fly via Sansa Airlines (www.flysansa.com) to either **Puerto Jimenez** or **Golfito**. Flight time is approximately 45 minutes.

Charter Flights and Land Transportation are also a great options to consider, especially for families or groups.

Guests may also drive their car to Golfito. It is recommended to park the car in a secured lot, and to remove anything of value from the car. A secure place to leave the parked car is at the Samoa del Sur Restaurant. The drive time is approximately 5 hours. The road between San Jose and Golfito is well maintained.

Once there, a Nicuesa representative will meet your clients and transport them by our boat across the Golfo Dulce to Playa Nicuesa Rainforest Lodge (the boat ride is approximately 30 minutes).

Please note that we pick up and drop off at both **GOLFITO** and **PUERTO JIMENEZ**. Both locations are **EQUAL DISTANCE** from the Lodge. Thus, you should feel free to coordinate your clients' arrival/departure to and from either location, **BUT, PLEASE WE KINDLY ASK YOU TO DO SO CONSIDERING OUR PREDEFINED BOAT TRANSFER HOURS.**

Important: The Nicuesa transfer boat cannot pick up/drop off guests any later than 3:00 pm (November - April) or 02:00 pm (May - September) on the day of their arrival or departure due to the water and weather conditions in the late afternoon. **FOR SAFETY REASONS, WE DO NOT PICK UP GUESTS THAT ARE SCHEDULED TO ARRIVE AFTER RECOMMENDED TIMES.** Therefore, please make sure the flights, private transfers and/or any other method of arrival/departure are scheduled before the above mentioned hours.



Reservations, Payment and Cancellation Policies Wholesalers, Travel Agents and Tour Operators

Playa Nicuesa Rainforest Lodge agrees to grant following **PAYMENT & CANCELLATION TERMS** to Travel Agencies, Wholesalers and Tour Operators as stated in terms below. Travel Agencies, Wholesalers and Tour Operators agree that all cancellations of reservations will be subject to the payment and charges outlined in this document.

NOTE: *It is highly recommended to get **travel insurance** for the trip. Most travellers can protect their vacation investment against these penalties should they have to cancel for any number of covered reasons including someone in the party getting ill or injured, a non-travelling family member getting sick, or inclement weather closing roads or airports. Please ask your clients to contact their local insurance company for more information.*

1. Payment & Cancellation Terms (FIT's)

Green Season (Nov 16th – Dec 15th, 2019 and May 1st – Sep 30th, 2020):

- Pre-payment for the total amount of the reservation is required 30 days prior to arrival of guests. Reservations placed less than 30 days of arrival must be paid in full at time of booking and are non-refundable.
- All cancellation requests must be on writing and sent via e mail to: reservations@nicuesalodge.com
- A 100% penalty will apply on cancellations received 30-0 days prior to the arrival date.
- The above policies also apply to any modifications made 30-0 days prior to the arrival date.
- No shows, early departures or unused portions of packages are non-refundable.
- Tours not taken will not be reimbursed nor exchanged.

High Season (Dec 16th – Dec 19st, 2019 and Jan 2nd – Apr 30th, 2020):

- Pre-payment for the total amount of the reservation is required 60 days prior to arrival of guests. Reservations placed less than 60 days of arrival must be paid in full at time of booking and are non-refundable.
- All cancellation requests must be on writing and sent via e mail to: reservations@nicuesalodge.com
- A 100% penalty will apply on cancellations received 60-0 days prior to the arrival date.
- The above policies also apply to any modifications made 60-0 days prior to the arrival date.
- No shows, early departures or unused portions of packages are non-refundable.
- Tours not taken will not be reimbursed nor exchanged.

Holiday Season (Dec 20th, 2019 – Jan 1st, 2020):

- A four night minimum stay is required during Holiday Season.
- A 50% non-refundable deposit must be paid in order to hold the room and confirm the reservation. Remaining 50% is due 90 days prior to the arrival date. Reservations placed less than 90 days of arrival must be fully paid at time of booking and are non-refundable.
- All cancellation requests must be on writing and sent via e mail to: reservations@nicuesalodge.com
- If a booking is cancelled after the deposit has been paid, the deposit will be forfeited.
- A 100% penalty will apply on cancellations received 90-0 days prior to the arrival date.
- The above policies also apply to any modifications made 90-0 days prior to the arrival date.
- No shows, early departures or unused portions of packages are non-refundable.
- Tours not taken will not be reimbursed nor exchanged.

Important: Due to Lodge size and high demand we have during the Holiday Season, we will be accepting reservations in such way to eliminate one-night openings. Please contact our reservations office for more information.

2. Payment & Cancellation Terms (Groups 4+ Rooms)

- Group reservations (4 or more rooms) will be held for 15 days from date of reservation request.
- After this period, a 25% deposit is required in order to guarantee the reservation.
- The initial 25% deposit of guarantee becomes non-refundable 30 days after payment is received and confirmed by our reservations office.
- Another 25% deposit will be prepaid 150 days prior to the date of arrival.
- Balance of total bill must be paid 120 days prior to group's arrival. Reservations placed less than 120 days of arrival must be fully paid at time of booking.
- Playa Nicuesa will release the rooms for sale if deposits are not received in a timely manner, according to the terms listed above.
- All cancellation requests must be on writing and sent via e mail to: reservations@nicuesalodge.com
- A 50% penalty will apply if cancellation is received 150-121 days prior to the arrival date.
- A 100% penalty will apply on cancellations received 120-0 days prior to the arrival date.
- The above policies also apply to any modifications made 120-0 days prior to the arrival date.
- No shows, early departures or unused portions of packages are non-refundable.
- Tours not taken will not be reimbursed nor exchanged.



3. Children Policy

Playa Nicuesa is a great place for a family vacation, the rainforest and the calm waters of the Golfo Dulce are excellent places for children to learn and participate in nature and sporting activities. We can provide "child-friendly" food and special tours geared towards kids, if needed. Just let us know in advance.

However, small children have limited opportunities. For that reason we request no children younger than 6 years of age. Children between 6 and 12 years of age will pay the specified children rates listed on this document. Children older than 12, will pay full adult rates.

Please remember that we are all nature's guests - in a true tropical rainforest - and there are real/inherent hazards in nature that parents/guardians must be aware of and supervise their children at all times. Playa Nicuesa is a remote and natural location, and electronic games, t.v. and computers are not available so that all guests may enjoy the nature they came to experience.

4. Guides and Tour Leaders

Playa Nicuesa has limited lodging space for guides and tour leaders. We offer the option for them to either staying at the Lodge regular rooms and paid full regular net rate or staying at our staff area (shared rooms and bathrooms), based on the following guidelines:

- US \$50 per person, per night special net fee for guides and tour leaders (Staff Area).
- Special fee covers lodging and meals.
- Availability cannot be guaranteed and must be re-confirmed with Playa Nicuesa reservations office prior to arrival.

5. Bank Information

Please submit payment receipt to: reservations@nicuesalodge.com

Bank information for Payments in Costa Rica:

Bank Name: Banco Nacional de Costa Rica
Cuenta Corriente en Dólares: **100-02-094-600208-0**
Cuenta Cliente: **15109410026002085**
Razón Social: Playa M.B. Zancudo Corporation S.A.
Cédula Jurídica: 3-101-292302
Apoderado Legal: Michael Butler

Bank information for International Wire Transfers:

Bank name: Banco Nacional de Costa Rica
Bank address: Avenidas 1 y 3, Calle 4, San Jose Costa Rica
Account holder: Playa M.B. Zancudo Corporation S.A.
Account number: 100-02-094-600208-0
SWIFT/BIC: BNCRCRSJ

Credit Card: Payments via credit card (visa or master card) are also accepted.



Lodge Accommodations

Playa Nicuesa Rainforest Lodge rooms offer privacy and comfort in a natural setting.

The Lodge has five private cabins (three 1-bedroom, one 2-bedroom and one cabin suite), one three-bedroom house and the Mango Guesthouse with four private rooms.

On Room Set Up:

We cannot put three beds in any one room, with the exception of the cabin suite set up as one large room. Please let us know your exact needs.

Room Description and Capacity:

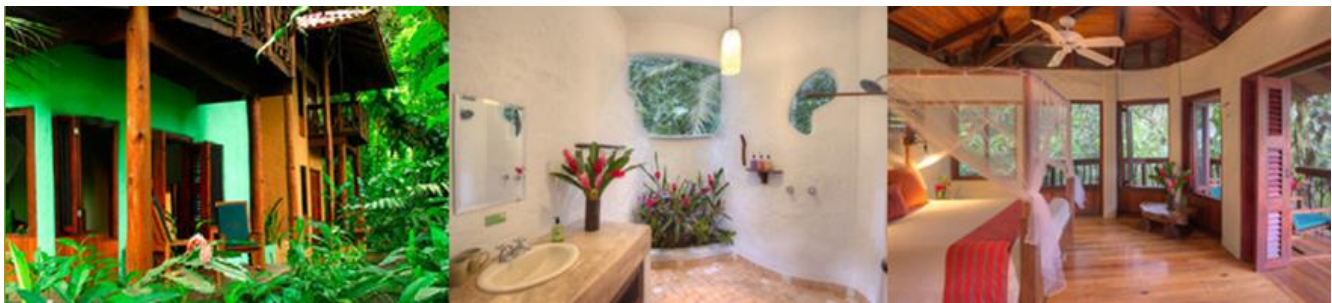
Mango Guest House (4 private rooms)

The Mango Guest House is a 2 story, jungle-chic structure with 4 private rooms. Each room has a private entrance, private bath with open air shower affording jungle views, private terrace, ceiling fans, louvered doors and windows that wrap around the room providing panoramic views. The Mango Guest House is separate from the Main Lodge.

This is a great option for all types of travelers. Especially a good choice for friends or families that want to be close, but also have the privacy of their own room with private bathroom. Also great for single travelers or those who are a bit nervous about staying in the jungle, as the mango rooms are more in an open area than the private cabins that are tucked into the rainforest. Also great for parties of approximately 6-12 that want to rent all 4 rooms at once.

Each room has one queen size bed (and we can put an additional single bed upon request).

Maximum Occupancy Per Room: 3 people including children



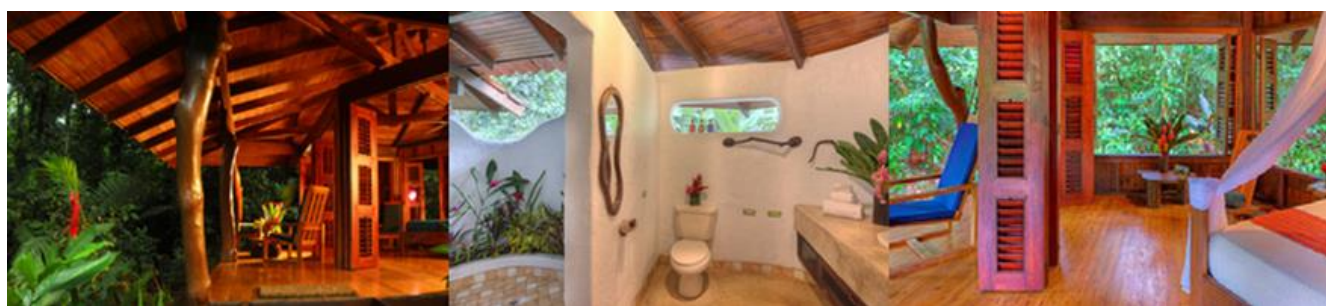
One Bedroom Cabins (3)

These private cabins are tucked into the rainforest and set apart from all other accommodations, affording you a unique feeling of being in an amazing natural setting. Beautifully and uniquely designed, each cabin has hardwood floors, ceiling fans, open air shower-bathroom with amazing rainforest views, wrap around terrace, and louvered doors and windows allowing you panoramic views. The garden open air shower is within the cabin's bathroom, yet allows you to look at nature all around.

Look out for the peeping monkeys!

All cabins have one queen size bed (and we can put an additional single bed upon request).

Maximum Occupancy: 3 people (including children)



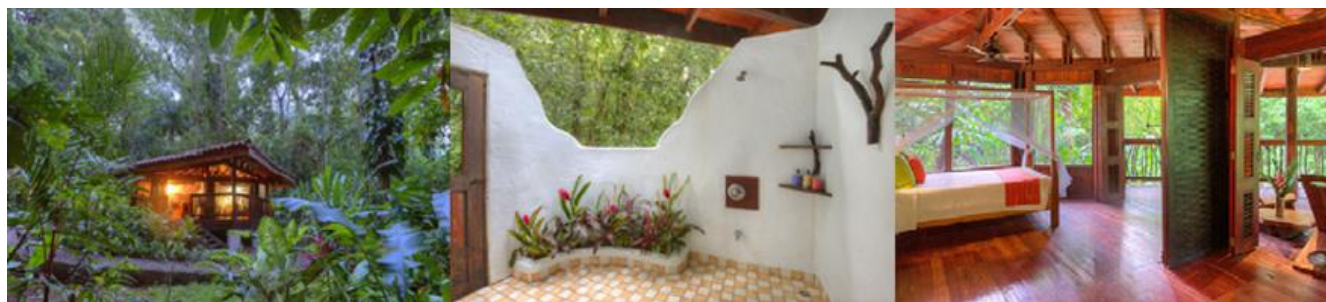
Cabin Suite (1)

The Cabin Suite is very private and set apart from all the other accommodations. Beautifully designed, our largest cabin features hardwood floors, ceiling fans, open air shower-bathroom with amazing rainforest views, wrap around terrace, and louvered doors and windows allowing you panoramic views. This cabin also is equipped with a deluxe bathroom with two sinks and our signature garden open air shower that is designed to allow you to look at nature all around.

Plus, this spacious, loft-like accommodation includes a sliding partition that adds flexibility to create 2 large bedrooms when closed or a bedroom with comfortable large sitting area, when open.

This cabin has one queen size bed (and we can put either an additional queen size bed or two additional single beds upon request).

Maximum Occupancy: 4 people (including children)



Two Bedroom Cabin (1)

This is a private cabin much like the single cabins but larger with two bedrooms and a common den that can also be converted for another bedroom. This is a great choice for families, especially with younger children. The cabin is set at the edge of the jungle but only a few steps from the main lodge building. Each cabin has a private entrance, beautiful hardwood floors, private open air shower-bathroom, private terrace, ceiling fans, louver doors and windows that wrap around the room to afford panoramic views of the jungle. The cabin has one large bathroom complete with our signature garden open air shower that is designed to allow you to look at nature all around. The cabin can accommodate up to 5 people. However, we recommend that families with older children or groups of adults that want to be near each other also consider two rooms in the mango guest house. Two rooms in mango guest house will give you more privacy amongst your group and an additional bathroom.

This cabin has one bedroom with a queen size bed and another bedroom with two single beds (we can put an additional single bed in the common den upon request).

Maximum Occupancy: 5 people (including children)



Jaguar House (1)

This is a 2 storey, 3 bedroom house surrounded by lush jungle. First floor has a living room, bedroom and full bath with beautiful open air shower. Loft-like second storey with master bedroom, second bedroom, full bath and large open terrace. Let the crashing of the waves lull you to sleep!

The house has one queen size bed downstairs, and one queen size bed and two single beds upstairs.

Maximum Occupancy: 6 people (including children)



Regular Room Rates 2019-2020 (Rack)

Rates are per person and include one night stay, three fabulous meals and more...

Green Season

Nov 16th – Dec 15th, 2019 and May 1st - Sep 30th, 2020

| | Quadruple | Triple | Double | Single | Child (6-12)* |
|------------------------|-----------|--------|--------|--------|---------------|
| Mango Guest House Room | N/A | \$195 | \$215 | \$280 | \$130 |
| One Bedroom Cabin | N/A | \$225 | \$250 | \$330 | \$130 |
| Cabin Suite | \$230 | \$245 | \$300 | N/A | \$130 |
| Two Bedroom Cabin | \$230 | \$245 | \$300 | N/A | \$130 |
| Jaguar House | \$295 | \$330 | \$405 | N/A | \$130 |

High Season

Dec 16th – Dec 19th, 2019 and Jan 2nd - Apr 30th, 2020

| | Quadruple | Triple | Double | Single | Child (6-12)* |
|------------------------|-----------|--------|--------|--------|---------------|
| Mango Guest House Room | N/A | \$235 | \$255 | \$320 | \$150 |
| One Bedroom Cabin | N/A | \$265 | \$295 | \$370 | \$150 |
| Cabin Suite | \$275 | \$290 | \$345 | N/A | \$150 |
| Two Bedroom Cabin | \$275 | \$290 | \$345 | N/A | \$150 |
| Jaguar House | \$335 | \$370 | \$445 | N/A | \$150 |

Holiday Season

Dec 20th, 2019 - Jan 1st, 2020

| | Quadruple | Triple | Double | Single | Child (6-12)* |
|------------------------|-----------|--------|--------|--------|---------------|
| Mango Guest House Room | N/A | \$265 | \$290 | \$395 | \$160 |
| One Bedroom Cabin | N/A | \$310 | \$335 | \$445 | \$160 |
| Cabin Suite | \$315 | \$330 | \$385 | N/A | \$160 |
| Two Bedroom Cabin | \$315 | \$330 | \$385 | N/A | \$160 |
| Jaguar House | \$375 | \$415 | \$490 | N/A | \$160 |





Lodge is closed from October 1st through November 15th

Mango Guest House Rooms and One Bedroom Cabins: Up to 3 People

Cabin Suite: Up to 4 People – Two Bedroom Cabin: Up to 5 People – Jaguar House: Up to 6 People

*Child Rate (6-12 years): Only if sharing room with adults – Please ask for details

Important Notes:

-  **Rates are per person and include taxes**, lodging, three fabulous meals, and unlimited self-guided hikes on preserve, use of kayaks, snorkeling and fishing equipment. Prepared Fruit Drinks, Carbonated and Alcoholic Drinks, Yoga, Massage, Guided tours & Adventure Activities are available for an additional fee.
-  **Boat pick up and drop off** from town of arrival and departure (Golfito/Puerto Jimenez) is included for stays of 2 or more nights.
-  **Child Policies and Rates:** Playa Nicuesa is happy to accept children between the ages of 6 and 12 years of age; see corresponding rates above. We do not accept guests with children younger than 6 years of age.
-  **Minimum Stay:** Two night minimum stay required for High and Green Seasons. Four night minimum stay required during Christmas/New Year's (December 20th, 2019 – January 1st, 2020).



3 & 4 NIGHTS RAINFOREST-MULTISPORT PACKAGE 2019-2020 (Rack Rates)

Exciting daily guided eco-sport activities and Nature/Wildlife tours. Each day choose one from the following activities: *

- Kayak Tour of Golfo Dulce
- Rio Esquinas Mangrove Jungle River Tour (kayak or motor boat)
- Rainforest/Waterfall Hike
- Botanical Garden Tour
- Golfo Dulce Boat/Snorkelling Tour
- Golfo Dulce In-Shore Fishing Tour – 2 hour tour (*Pacific Ocean sport fishing available at extra cost*)

Lodging at Playa Nicuesa Rainforest Lodge, Three Delicious Meals Daily; Snacks and Juices, Boat Pick Up and Drop Off from Town of Arrival/Departure (Golfito/Puerto Jimenez), Unlimited Self-Guided Hiking on Lodge Preserve Trails, Unlimited Use of Kayaks, Snorkelling and Fishing Equipment. Prepared Fruit Drinks, Carbonated and Alcoholic Drinks, are not included.

* 03 NTS = 03 Guided Tours / 04 NTS = 04 Guided Tours

Tours not taken will not be reimbursed nor exchanged.

Prices are per person and taxes are included. Rates are in US Dollars.

Child Rate is valid for children 6-12 years of age when sharing room with adults.

2 Adults Minimum for All Packages.

Lodge is closed October 1 - November 15 Annually.

Green Season

Nov 16th – Dec 15th, 2019 and May 1st - Sep 30th, 2020

| | Mango Guest House | | One Bedroom Cabin | | Two Bedroom Cabin & Cabin Suite | | Jaguar House | |
|-----------|-------------------|-----------|-------------------|-----------|---------------------------------|-----------|--------------|-----------|
| | 03 Nights | 04 Nights | 03 Nights | 04 Nights | 03 Nights | 04 Nights | 03 Nights | 04 Nights |
| DOUBLE | \$810 | \$1080 | \$915 | \$1220 | \$1065 | \$1420 | \$1380 | \$1840 |
| TRIPLE | \$750 | \$1000 | \$840 | \$1120 | \$900 | \$1200 | \$1155 | \$1540 |
| QUADRUPLE | - | - | - | - | \$855 | \$1140 | \$1050 | \$1400 |
| CHILD | \$555 | \$740 | \$555 | \$740 | \$555 | \$740 | \$555 | \$740 |

High Season

Dec 16th – Dec 19th, 2019 and Jan 2nd - Apr 30th, 2020

| | Mango Guest House | | One Bedroom Cabin | | Two Bedroom Cabin & Cabin Suite | | Jaguar House | |
|-----------|-------------------|-----------|-------------------|-----------|---------------------------------|-----------|--------------|-----------|
| | 03 Nights | 04 Nights | 03 Nights | 04 Nights | 03 Nights | 04 Nights | 03 Nights | 04 Nights |
| DOUBLE | \$930 | \$1240 | \$1050 | \$1400 | \$1200 | \$1600 | \$1500 | \$2000 |
| TRIPLE | \$870 | \$1160 | \$960 | \$1280 | \$1035 | \$1380 | \$1275 | \$1700 |
| QUADRUPLE | - | - | - | - | \$990 | \$1320 | \$1170 | \$1560 |
| CHILD | \$615 | \$820 | \$615 | \$820 | \$615 | \$820 | \$615 | \$820 |

Holiday Season

Dec 20th, 2019 - Jan 1st, 2020

| | Mango Guest House | | One Bedroom Cabin | | Two Bedroom Cabin & Cabin Suite | | Jaguar House | |
|-----------|-------------------|-----------|-------------------|-----------|---------------------------------|-----------|--------------|-----------|
| | 03 Nights | 04 Nights | 03 Nights | 04 Nights | 03 Nights | 04 Nights | 03 Nights | 04 Nights |
| DOUBLE | \$1035 | \$1380 | \$1170 | \$1560 | \$1320 | \$1760 | \$1635 | \$2180 |
| TRIPLE | \$960 | \$1280 | \$1095 | \$1460 | \$1155 | \$1540 | \$1410 | \$1880 |
| QUADRUPLE | - | - | - | - | \$1110 | \$1480 | \$1290 | \$1720 |
| CHILD | \$645 | \$860 | \$645 | \$860 | \$645 | \$860 | \$645 | \$860 |



Reservations & Information:

US & Canada Toll Free: 1 866 5048116 / Costa Rica: T (506) 2258 8250

reservations@nicuesalodge.com / www.nicuesalodge.com



enchanting-hotels
exclusive hotel collection



5, 6 & 7 NIGHTS RAINFOREST-MULTISPORT PACKAGE 2019-2020 (Rack Rates)

Exciting daily guided eco-sport activities and Nature/Wildlife tours. Each day choose one from the following activities: *

- Kayak Tour of Golfo Dulce
- Rio Esquinas Mangrove Jungle River Tour (kayak or motor boat)
- Rainforest/Waterfall Hike
- Botanical Garden Tour
- Golfo Dulce Boat/Snorkelling Tour
- Golfo Dulce In-Shore Fishing Tour – 2 hour tour (*Pacific Ocean sport fishing available at extra cost*)

Lodging at Playa Nicuesa Rainforest Lodge, Three Delicious Meals Daily; Snacks and Juices, Boat Pick Up and Drop Off from Town of Arrival/Departure (Golfito/Puerto Jimenez), Unlimited Self-Guided Hiking on Lodge Preserve Trails, Unlimited Use of Kayaks, Snorkelling and Fishing equipment. **Prepared Fruit Drinks, Carbonated and Alcoholic Drinks, are not included.**

* 05 NTS = 05 Guided Tours / 06 NTS = 06 Guided Tours / 07 NTS = 07 Guided Tours

Tours not taken will not be reimbursed nor exchanged.

Prices are per person and taxes are included. Rates are in US Dollars.

Child Rate is valid for children 6-12 years of age when sharing room with adults.

2 Adults Minimum for All Packages.

Lodge is closed October 1 - November 15 Annually.

Green Season

Nov 16th – Dec 15th, 2019 and May 1st - Sep 30th, 2020

| | Mango Guest House | | | One Bedroom Cabin | | | Two Bedroom Cabin & Cabin Suite | | | Jaguar House | | |
|-----------|-------------------|----------|----------|-------------------|----------|----------|---------------------------------|----------|----------|--------------|----------|----------|
| | 5 Nights | 6 Nights | 7 Nights | 5 Nights | 6 Nights | 7 Nights | 5 Nights | 6 Nights | 7 Nights | 5 Nights | 6 Nights | 7 Nights |
| DOUBLE | \$1350 | \$1620 | \$1890 | \$1525 | \$1830 | \$2135 | \$1775 | \$2130 | \$2485 | \$2300 | \$2760 | \$3220 |
| TRIPLE | \$1250 | \$1500 | \$1750 | \$1400 | \$1680 | \$1960 | \$1500 | \$1800 | \$2100 | \$1925 | \$2310 | \$2695 |
| QUADRUPLE | - | - | - | - | - | - | \$1425 | \$1710 | \$1995 | \$1750 | \$2100 | \$2450 |
| CHILD | \$925 | \$1110 | \$1295 | \$925 | \$1110 | \$1295 | \$925 | \$1110 | \$1295 | \$925 | \$1110 | \$1295 |

High Season

Dec 16th – Dec 19th, 2019 and Jan 2nd - Apr 30th, 2020

| | Mango Guest House | | | One Bedroom Cabin | | | Two Bedroom Cabin & Cabin Suite | | | Jaguar House | | |
|-----------|-------------------|----------|----------|-------------------|----------|----------|---------------------------------|----------|----------|--------------|----------|----------|
| | 5 Nights | 6 Nights | 7 Nights | 5 Nights | 6 Nights | 7 Nights | 5 Nights | 6 Nights | 7 Nights | 5 Nights | 6 Nights | 7 Nights |
| DOUBLE | \$1550 | \$1860 | \$2170 | \$1750 | \$2100 | \$2450 | \$2000 | \$2400 | \$2800 | \$2500 | \$3000 | \$3500 |
| TRIPLE | \$1450 | \$1740 | \$2030 | \$1600 | \$1920 | \$2240 | \$1725 | \$2070 | \$2415 | \$2125 | \$2550 | \$2975 |
| QUADRUPLE | - | - | - | - | - | - | \$1650 | \$1980 | \$2310 | \$1950 | \$2340 | \$2730 |
| CHILD | \$1025 | \$1230 | \$1435 | \$1025 | \$1230 | \$1435 | \$1025 | \$1230 | \$1435 | \$1025 | \$1230 | \$1435 |

Holiday Season

Dec 20th, 2019 - Jan 1st, 2020

| | Mango Guest House | | | One Bedroom Cabin | | | Two Bedroom Cabin & Cabin Suite | | | Jaguar House | | |
|-----------|-------------------|----------|----------|-------------------|----------|----------|---------------------------------|----------|----------|--------------|----------|----------|
| | 5 Nights | 6 Nights | 7 Nights | 5 Nights | 6 Nights | 7 Nights | 5 Nights | 6 Nights | 7 Nights | 5 Nights | 6 Nights | 7 Nights |
| DOUBLE | \$1725 | \$2070 | \$2415 | \$1950 | \$2340 | \$2730 | \$2200 | \$2640 | \$3080 | \$2725 | \$3270 | \$3815 |
| TRIPLE | \$1600 | \$1920 | \$2240 | \$1825 | \$2190 | \$2555 | \$1925 | \$2310 | \$2695 | \$2350 | \$2820 | \$3290 |
| QUADRUPLE | - | - | - | - | - | - | \$1850 | \$2220 | \$2590 | \$2150 | \$2580 | \$3010 |
| CHILD | \$1075 | \$1290 | \$1505 | \$1075 | \$1290 | \$1505 | \$1075 | \$1290 | \$1505 | \$1075 | \$1290 | \$1505 |



FAMILY "MAR Y TIERRA" ADVENTURE PACKAGE 2019-2020 (Rack Rates)

One Major Guided Activity per Day. Choose from the following options:

- Kayak/Snorkel Tour of Golfo Dulce
- Esquinas Mangrove Jungle River Tour (kayak or motor boat) **OR** Golfo Dulce Boat/Dolphin Tour
- Intro to Rainforest Hike **OR** Rainforest/Waterfall Hike

During your stay, you can also participate in one of the following activities:

- Golfo Dulce In-Shore Fishing Tour – 2 hour tour (Pacific Ocean sport fishing available at extra cost)
- Dusk Hike to look for lizards, snakes, bats, frogs **OR** Night Hike to hear and see the magic of the rainforest

Special Educational Tours (½ to 1 hr. tours after lunch or before dinner, offered on a rotating basis). Package includes 2 of the following:

- Coconut Opening 101 – Learn how to open a coconut and much more!
- Garden Tour- Explore the tropical garden and learn how pineapples and other fruits grow
- Sustainability Tour- Learn about solar energy, recycling and other environmental initiatives of the lodge
- Slide Show/Educational Presentation on various topics such as Medicinal Plants, Tropical Insects, Dolphins and Whales, Conservation of the Osa Peninsula, Snakes of the Tropics (topics are rotated)

Lodging at Playa Nicuesa Rainforest Lodge, Three Delicious Meals Daily; Snacks and Juices, Boat Pick Up and Drop Off from Town of Arrival/Departure (Golfito/Puerto Jimenez), Unlimited Self-Guided Hiking on Lodge Preserve Trails, Unlimited Use of Kayaks, Snorkeling and Fishing equipment. **Prepared Fruit Drinks, Carbonated and Alcoholic Drinks, are not included.**

Tours not taken will not be reimbursed nor exchanged.

Prices are **per person** and taxes are included. Rates are in US Dollars.

Child Rate is valid for children 6-12 years of age when sharing room with adults.

2 Adults Minimum for All Packages.

Lodge is closed October 1 - November 15 Annually.

Green Season

Nov 16th – Dec 15th, 2019 and May 1st - Sep 30th, 2020

| | Mango Guest House | | | | One Bedroom Cabin | | | | Two Bedroom Cabin & Cabin Suite | | | | Jaguar House | | | |
|-----------|-------------------|----------|----------|----------|-------------------|----------|----------|----------|---------------------------------|----------|----------|----------|--------------|----------|----------|----------|
| | 4 Nights | 5 Nights | 6 Nights | 7 Nights | 4 Nights | 5 Nights | 6 Nights | 7 Nights | 4 Nights | 5 Nights | 6 Nights | 7 Nights | 4 Nights | 5 Nights | 6 Nights | 7 Nights |
| DOUBLE | \$1175 | \$1390 | \$1605 | \$1820 | \$1315 | \$1565 | \$1815 | \$2065 | \$1515 | \$1815 | \$2115 | \$2415 | \$1935 | \$2340 | \$2745 | \$3150 |
| TRIPLE | \$1095 | \$1290 | \$1485 | \$1680 | \$1215 | \$1440 | \$1665 | \$1890 | \$1295 | \$1540 | \$1785 | \$2030 | \$1635 | \$1965 | \$2295 | \$2625 |
| QUADRUPLE | - | - | - | - | - | - | - | - | \$1235 | \$1465 | \$1695 | \$1925 | \$1495 | \$1790 | \$2085 | \$2380 |
| CHILD | \$835 | \$965 | \$1095 | \$1225 | \$835 | \$965 | \$1095 | \$1225 | \$835 | \$965 | \$1095 | \$1225 | \$835 | \$965 | \$1095 | \$1225 |

High Season

Dec 16th – Dec 19th, 2019 and Jan 2nd - Apr 30th, 2020

| | Mango Guest House | | | | One Bedroom Cabin | | | | Two Bedroom Cabin & Cabin Suite | | | | Jaguar House | | | |
|-----------|-------------------|----------|----------|----------|-------------------|----------|----------|----------|---------------------------------|----------|----------|----------|--------------|----------|----------|----------|
| | 4 Nights | 5 Nights | 6 Nights | 7 Nights | 4 Nights | 5 Nights | 6 Nights | 7 Nights | 4 Nights | 5 Nights | 6 Nights | 7 Nights | 4 Nights | 5 Nights | 6 Nights | 7 Nights |
| DOUBLE | \$1335 | \$1590 | \$1845 | \$2100 | \$1495 | \$1790 | \$2085 | \$2380 | \$1695 | \$2040 | \$2385 | \$2730 | \$2095 | \$2540 | \$2985 | \$3430 |
| TRIPLE | \$1255 | \$1490 | \$1725 | \$1960 | \$1375 | \$1640 | \$1905 | \$2170 | \$1475 | \$1765 | \$2055 | \$2345 | \$1795 | \$2165 | \$2535 | \$2905 |
| QUADRUPLE | - | - | - | - | - | - | - | - | \$1415 | \$1690 | \$1965 | \$2240 | \$1655 | \$1990 | \$2325 | \$2660 |
| CHILD | \$915 | \$1065 | \$1215 | \$1365 | \$915 | \$1065 | \$1215 | \$1365 | \$915 | \$1065 | \$1215 | \$1365 | \$915 | \$1065 | \$1215 | \$1365 |

Holiday Season

Dec 20th, 2019 - Jan 1st, 2020

| | Mango Guest House | | | | One Bedroom Cabin | | | | Two Bedroom Cabin & Cabin Suite | | | | Jaguar House | | | |
|-----------|-------------------|----------|----------|----------|-------------------|----------|----------|----------|---------------------------------|----------|----------|----------|--------------|----------|----------|----------|
| | 4 Nights | 5 Nights | 6 Nights | 7 Nights | 4 Nights | 5 Nights | 6 Nights | 7 Nights | 4 Nights | 5 Nights | 6 Nights | 7 Nights | 4 Nights | 5 Nights | 6 Nights | 7 Nights |
| DOUBLE | \$1475 | \$1765 | \$2055 | \$2345 | \$1655 | \$1990 | \$2325 | \$2660 | \$1855 | \$2240 | \$2625 | \$3010 | \$2275 | \$2765 | \$3255 | \$3745 |
| TRIPLE | \$1375 | \$1640 | \$1905 | \$2170 | \$1555 | \$1865 | \$2175 | \$2485 | \$1635 | \$1965 | \$2295 | \$2625 | \$1975 | \$2390 | \$2805 | \$3220 |
| QUADRUPLE | - | - | - | - | - | - | - | - | \$1575 | \$1890 | \$2205 | \$2520 | \$1815 | \$2190 | \$2565 | \$2940 |
| CHILD | \$955 | \$1115 | \$1275 | \$1435 | \$955 | \$1115 | \$1275 | \$1435 | \$955 | \$1115 | \$1275 | \$1435 | \$955 | \$1115 | \$1275 | \$1435 |



Reservations & Information:

US & Canada Toll Free: 1 866 5048116 / Costa Rica: T (506) 2258 8250

reservations@nicuesalodge.com / www.nicuesalodge.com



enchanting-hotels
exclusive hotel collection



HONEYMOON GETAWAY PACKAGE 2019-2020 (Rack Rates)

- Private Guided Rainforest Hike to the Waterfall-Swimming Hole.
- Rainforest Aromatherapy Massage in the Privacy of Cabin or at Private Beach Deck.
- One Private Candlelight Dinner on Lodge Terrace with Bottle of Champagne or Jungle Love Cocktails.
- Plant a tree in the rainforest in honour of your love and new marriage– while contributing to our Reforestation Project and preservation of the Rainforest.
- 3 Guided Activities & Nature/Wildlife Tours. Choose from the following activities:

- Kayak Tour of Golfo Dulce
- Rio Esquinas Mangrove Jungle River Tour (kayak or motor boat)
- Rainforest/Waterfall Hike
- Botanical Garden Tour
- Golfo Dulce Boat/Snorkeling Tour
- Golfo Dulce In-Shore Fishing Tour – 2 hour tour (*Pacific Ocean sport fishing available at extra cost*)

- Lodging at Playa Nicuesa Rainforest Lodge, Three Delicious Meals Daily; Snacks and Juices, Boat Pick Up and Drop Off from Town of Arrival/Departure (Golfito/Puerto Jimenez), Unlimited Self-Guided Hiking on Lodge Preserve Trails, Unlimited Use of Kayaks, Snorkeling and Fishing equipment. **Prepared Fruit Drinks, Carbonated and Alcoholic Drinks, are not included.**

Tours not taken will not be reimbursed nor exchanged.

Prices are **per person** and taxes are included. Rates are in US Dollars.

Child Rate is valid for children 6-12 years of age when sharing room with adults.

2 Adults Minimum for All Packages.

Lodge is closed October 1 - November 15 Annually.

Green Season

Nov 16th – Dec 15th, 2019 and May 1st - Sep 30th, 2020

| | | One Bedroom Cabin | | | | Cabin Suite | | | |
|--------|--|-------------------|----------|----------|----------|-------------|----------|----------|----------|
| | | 4 Nights | 5 Nights | 6 Nights | 7 Nights | 4 Nights | 5 Nights | 6 Nights | 7 Nights |
| DOUBLE | | \$1425 | \$1675 | \$1925 | \$2175 | \$1625 | \$1925 | \$2225 | \$2525 |

High Season

Dec 16th – Dec 19th, 2019 and Jan 2nd - Apr 30th, 2020

| | | One Bedroom Cabin | | | | Cabin Suite | | | |
|--------|--|-------------------|----------|----------|----------|-------------|----------|----------|----------|
| | | 4 Nights | 5 Nights | 6 Nights | 7 Nights | 4 Nights | 5 Nights | 6 Nights | 7 Nights |
| DOUBLE | | \$1605 | \$1900 | \$2195 | \$2490 | \$1805 | \$2150 | \$2495 | \$2840 |

Holiday Season

Dec 20th, 2019 - Jan 1st, 2020

| | | One Bedroom Cabin | | | | Cabin Suite | | | |
|--------|--|-------------------|----------|----------|----------|-------------|----------|----------|----------|
| | | 4 Nights | 5 Nights | 6 Nights | 7 Nights | 4 Nights | 5 Nights | 6 Nights | 7 Nights |
| DOUBLE | | \$1765 | \$2100 | \$2435 | \$2770 | \$1965 | \$2350 | \$2735 | \$3120 |



YOGA BLISS PACKAGE 2019-2020 (Rack Rates)

- Two Daily Yoga Classes (sunrise and sunset).
- 3 Guided Adventure Activities. Choose from the following activities:
 - Rainforest/Waterfall Hike in National Park
 - Botanic Garden Tour
 - Golfo Dulce Kayak/Snorkeling Tour
 - Golfo Dulce Boat/Snorkeling Tour
 - Rio Esquinas Mangrove Jungle River Tour (kayak or motor boat)
 - Bird Watching Tours

Lodging at Playa Nicuesa Rainforest Lodge, Three Delicious Meals Daily; Snacks and Juices, Boat Pick Up and Drop Off from Town of Arrival/Departure (Golfito/Puerto Jimenez), Unlimited Self-Guided Hiking on Lodge Preserve Trails, Unlimited Use of Kayaks, Snorkeling and Fishing equipment. Prepared Fruit Drinks, Carbonated and Alcoholic Drinks, are not included.

Tours not taken will not be reimbursed nor exchanged.

Prices are per person and taxes are included. Rates are in US Dollars.

Child Rate is valid for children 6-12 years of age when sharing room with adults.

2 Adults Minimum for All Packages.

Lodge is closed October 1 - November 15 Annually.

Green Season

Nov 16th – Dec 15th, 2019 and May 1st - Sep 30th, 2020

| | Mango Guest House | | | One Bedroom Cabin | | | Two Bedroom Cabin & Cabin Suite | | | Jaguar House | | |
|-----------|-------------------|----------|----------|-------------------|----------|----------|---------------------------------|----------|----------|--------------|----------|----------|
| | 5 Nights | 6 Nights | 7 Nights | 5 Nights | 6 Nights | 7 Nights | 5 Nights | 6 Nights | 7 Nights | 5 Nights | 6 Nights | 7 Nights |
| DOUBLE | \$1390 | \$1635 | \$1880 | \$1565 | \$1845 | \$2125 | \$1815 | \$2145 | \$2475 | \$2340 | \$2775 | \$3210 |
| TRIPLE | \$1290 | \$1515 | \$1740 | \$1440 | \$1695 | \$1950 | \$1540 | \$1815 | \$2090 | \$1965 | \$2325 | \$2685 |
| QUADRUPLE | - | - | - | - | - | - | \$1465 | \$1725 | \$1985 | \$1790 | \$2115 | \$2440 |
| CHILD | \$965 | \$1125 | \$1285 | \$965 | \$1125 | \$1285 | \$965 | \$1125 | \$1285 | \$965 | \$1125 | \$1285 |

High Season

Dec 16th – Dec 19th, 2019 and Jan 2nd - Apr 30th, 2020

| | Mango Guest House | | | One Bedroom Cabin | | | Two Bedroom Cabin & Cabin Suite | | | Jaguar House | | |
|-----------|-------------------|----------|----------|-------------------|----------|----------|---------------------------------|----------|----------|--------------|----------|----------|
| | 5 Nights | 6 Nights | 7 Nights | 5 Nights | 6 Nights | 7 Nights | 5 Nights | 6 Nights | 7 Nights | 5 Nights | 6 Nights | 7 Nights |
| DOUBLE | \$1590 | \$1875 | \$2160 | \$1790 | \$2115 | \$2440 | \$2040 | \$2415 | \$2790 | \$2540 | \$3015 | \$3490 |
| TRIPLE | \$1490 | \$1755 | \$2020 | \$1640 | \$1935 | \$2230 | \$1765 | \$2085 | \$2405 | \$2165 | \$2565 | \$2965 |
| QUADRUPLE | - | - | - | - | - | - | \$1690 | \$1995 | \$2300 | \$1990 | \$2355 | \$2720 |
| CHILD | \$1065 | \$1245 | \$1425 | \$1065 | \$1245 | \$1425 | \$1065 | \$1245 | \$1425 | \$1065 | \$1245 | \$1425 |

Holiday Season

Dec 20th, 2019 - Jan 1st, 2020

| | Mango Guest House | | | One Bedroom Cabin | | | Two Bedroom Cabin & Cabin Suite | | | Jaguar House | | |
|-----------|-------------------|----------|----------|-------------------|----------|----------|---------------------------------|----------|----------|--------------|----------|----------|
| | 5 Nights | 6 Nights | 7 Nights | 5 Nights | 6 Nights | 7 Nights | 5 Nights | 6 Nights | 7 Nights | 5 Nights | 6 Nights | 7 Nights |
| DOUBLE | \$1765 | \$2085 | \$2405 | \$1990 | \$2355 | \$2720 | \$2240 | \$2655 | \$3070 | \$2765 | \$3285 | \$3805 |
| TRIPLE | \$1640 | \$1935 | \$2230 | \$1865 | \$2205 | \$2545 | \$1965 | \$2325 | \$2685 | \$2390 | \$2835 | \$3280 |
| QUADRUPLE | - | - | - | - | - | - | \$1890 | \$2235 | \$2580 | \$2190 | \$2595 | \$3000 |
| CHILD | \$1115 | \$1305 | \$1495 | \$1115 | \$1305 | \$1495 | \$1115 | \$1305 | \$1495 | \$1115 | \$1305 | \$1495 |

